



AESTHETIC

LUMENIS. ENHANCING LIFE. ADVANCING TECHNOLOGY.



configurations

- **LightSheer Duet with HS** – Exciting new alternative for those seeking high-speed, comfortable treatments to offer your patient population, and increase your patient throughput.
- **LightSheer Duet with ET & HS** – Versatile platform for those focused on practice growth, enables a customized approach across the broadest range of patients and treatment areas.

specifications

PLATFORM	LightSheer DUET	
SYSTEMS AVAILABLE	LightSheer ET	LightSheer HS
Technical Specifications		
Laser Type	AlGaAs Diode Arrays	AlGaAs Diode Arrays
Wavelength	805 nm (nominal)	805 nm (nominal)
Spot Size	9 mm x 9 mm	22 mm x 35 mm
Repetition rate	Up to 3 Hz	Up to 3 Hz
Pulse Repetitions	1 pulse	1 – 3 pulses
Fluence	10 - 100 J/cm ²	4.5 - 12 J/cm ²
Pulse Width (OptiPulse™)	5 - 400 ms	30 - 400 ms
Peak Power	1600 W	2300 W
Comfort Management	ChillTip™ contact cooling (5°C)	Vacuum-Assist (up to 18 inHg)
Preset Parameters	Yes	Yes
Warranty	1 Year	1 Year
On-Site Service	Yes; replaceable handpiece	Yes; replaceable handpiece

Platform Specifications

Electrical	100-240 VAC, 15 A max. 50/60 Hz single-phase grounded outlet
Weight	48 kg (105 lbs)
Dimensions (WxDxH)	44 x 50 x 112 cm; (17.4 x 19.7 x 44 in)



¹ Klavuhn KG. Illumination Geometry: The Importance of Laser Beam Spatial Characteristics. Lumenis, 2001.
FDA cleared for hair removal and permanent reduction in all skin types (Fitzpatrick I-VI) and tanned skin; PFB (pseudofolliculitis barbae); superficial leg veins; benign pigmented lesions.



ET/XC handpiece danger label



HS handpiece danger label



Ensure Compliance with Government Safety and Performance Standards
1-877-LUMENIS (1-877-586-3647)
Outside USA, visit www.lumenis.com, click 'Service & Support'



AMERICAS	EUROPE / MIDDLE EAST	JAPAN	ASIA / PACIFIC
Lumenis Inc. Santa Clara, CA, USA Tel +1 408 764 3000 1 877 586 3647 Fax +1 408 764 3999 1 800 505 1133	Lumenis (GERMANY) GmbH Dreieich-Dreieichenhain, Germany Tel +49 6103 8335 0 Fax +49 6103 8335 300	Lumenis (JAPAN) Co. Ltd. Tokyo, Japan Tel +81 3 5789 8300 Fax +81 3 5789 8310	Lumenis (CHINA) Ltd. Beijing, China Tel +86 10 6510 2620 Fax +86 10 6510 2621



©2015 All rights reserved. The Lumenis Group of Companies. Lumenis, its logo, LightSheer, LightSheer Duet, ChillTip and OptiPulse are trademarks or registered trademarks of the Lumenis Group of Companies. Specifications are subject to change without notice. This product is CE marked. 3/09 PB-1049670 rev B



LightSheer® DUET™

High Speed Permanent Hair Reduction

RETHINK THE BUSINESS OF HAIR REMOVAL



www.aesthetic.lumenis.com





HIGH SPEED

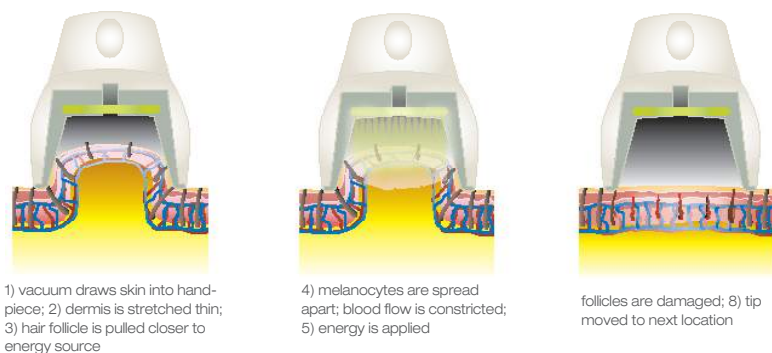
Introducing LightSheer® DUET™

Rethink the Business of Hair Removal

We've revolutionized the Gold Standard LightSheer with vacuum-assist technology and by dramatically increasing the spot size to 22 x 35 mm. The LightSheer DUET enables you to **treat backs and legs comfortably** in only 15 minutes, making hair removal **profitable...without anesthetics** and gels.

- No topical anesthetic required
- Eliminate prep time
- Reduce treatment times up to 75%
- Differentiate your practice
- Grow your patient base
- Grow your profits

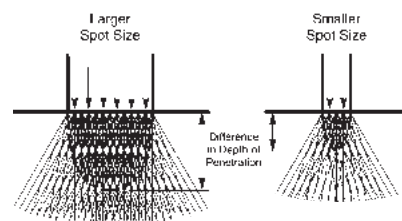
High-speed integrated vacuum-assist technology



- Reduction in competing chromophores enables more efficient delivery of laser energy
- Lower required fluence levels produce a more comfortable procedure, eliminating the need for topical anesthetics

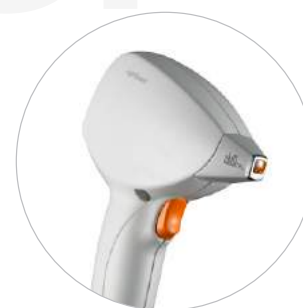
depth of penetration

Larger spot size enables greater depth of penetration, for improved absorption of energy at the target follicle¹



Versatile

The LightSheer DUET includes two **optimal wavelength 805 nm** diode hair removal systems on one versatile platform.



LightSheer ET

9 x 9 mm spot size

- Fluence up to 100 J/cm²
- ChillTip™ continuous contact cooling
- Pulse widths up to 400 ms



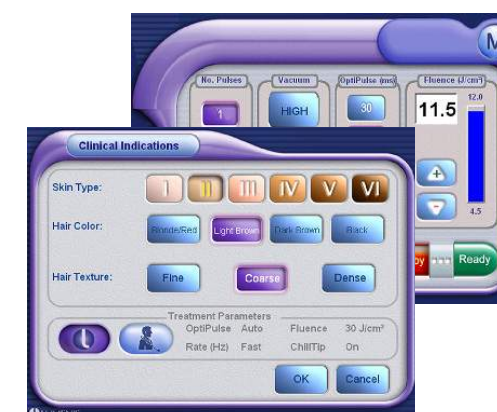
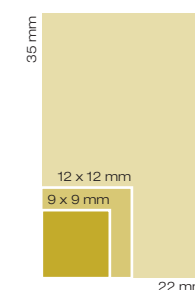
NEW

LightSheer HS

22 x 35 mm spot size

- Largest spot size of any diode
- Integrated vacuum-assist technology
- Pulse widths up to 400 ms
- No cooling or anesthetics required

actual spot size



Intuitive touchscreens

- Recommended treatment settings
- Customizable treatment presets

Differentiate your practice

- Treat with 1/10 the pulses—save time and effort
- Make large-area treatments affordable for your patients

Estimated Pulses per Treated Site

Treatment Site	Est. Area (cm²)	Spot Size:	ET	XC*	HS
			9x9mm	12x12mm	22x35mm
bikini area	125		154	87	16
underarm (2)	190		235	132	25
man's back	2750		3395	1910	357
full legs (2)	8100		10,000	5695	1052

*12 x 12 mm spot size available on XC platform only

"I've used several laser hair removal devices in my practice... LightSheer remains the 'gold standard' because it is the most effective for targeting unwanted hair. Effectiveness, long lasting results, satisfied patients...all add up to repeat business and positive referrals."

Beth Haney, NP

"Patients will love it. Nurses will love it.... I recently treated a large gentleman's back and in the 20 minutes it took to treat him, he was practically falling asleep – the treatment was that comfortable."

Christine Dierickx, MD

"The new LightSheer DUET is extremely well tolerated by patients. My hair removal nurse likes the single pulsing for treatment speed and patient comfort. My expectation is the LightSheer diode will perform better as it penetrates deeper...This system is definitely worth pursuing."

Girish Munavalli, MD

"I had my back treated with the new High Speed system in 15 minutes. Normally, this would take about an hour to do, so the time savings alone is significant. ...I think it's a winner."

Mitch Goldman, MD